

# Betty Botter

Frank A. Wallace, Op. 38

**Allegretto** ♩ = 108

16

Soprano 3

Bet-ty, *mp* Bet-ty Bot-ter, *mp* Bet - ty Bot - ter bought some

but-ter but said she this but - ter's bit - ter bit - ter *spoken*

If I put it in my *mf* bat-ter it will make my bat-ter bit-ter bit-ter It will *p*

make my bat - ter bit - ter make it bit-ter bit-ter So Bet - ty Bot - ter bought a

bit of bet - ter bet - ter but-ter Bet - ter but - ter And she put it in her bat-ter

and it made her bat-ter bet - ter So 'twas bet - ter Bet - ty Bot - ter bought

a bit of \_\_\_\_\_ bet-ter but-ter Bet-ty, Bet-ty Bot-ter, *mp*

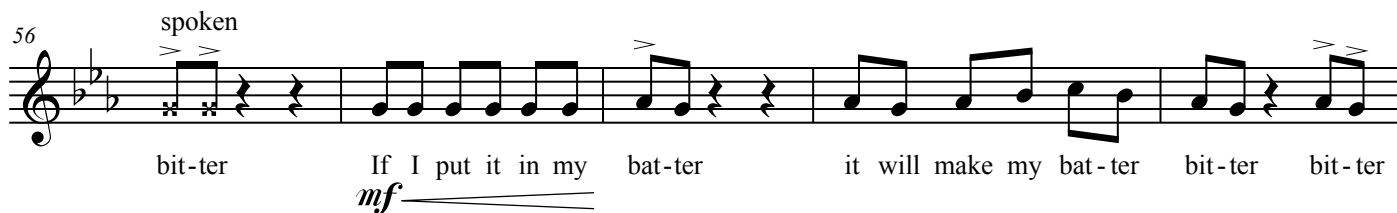
Gyre Publications

Copyright ©2005 Frank A. Wallace  
All Rights Reserved - Gyre 2114

51



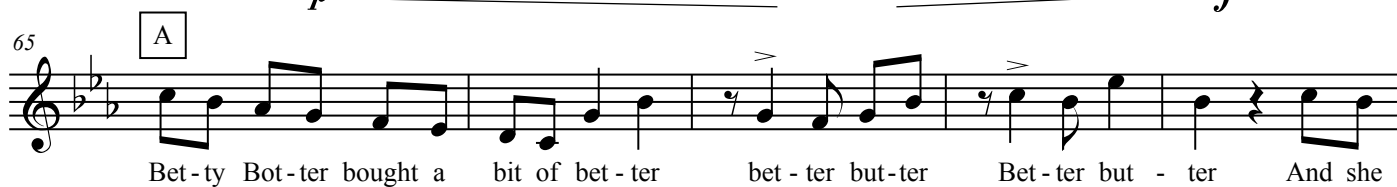
56



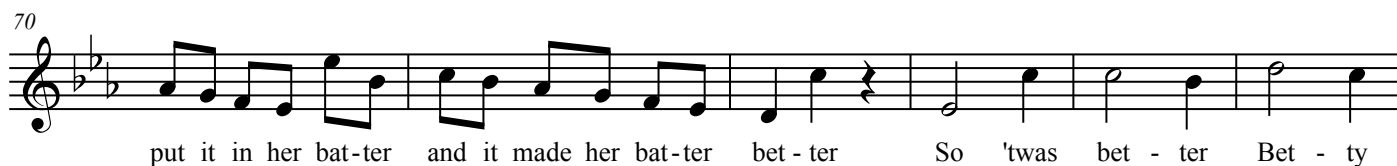
61



65



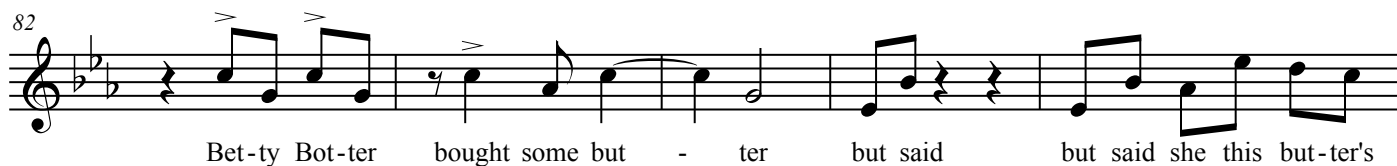
70



76



82



87



92



97 B

So Bet - ty Bet - ty Bot - ter bought a bit of bet - ter bet - ter but - ter  
*f*

102

And she put it in her bat - ter and it made her So 'twas bet - ter Bet -

109 C

ty Bot - ter bought some bet - ter but - ter Bet - ty Bot - ter  
*p*

116

bought some bet - ter but - ter but - ter but - ter but - ter  
*mf* *f*

123 D

Bot - ter but - ter but said she this but - ter's  
*f* *p*

131

bit - ter If I put it in my bat - ter it will make my  
*f* *mf*

135

bat - ter bit - ter Bet - ty Bot - ter bought a bit of bet - ter but - ter And she

140 *ritardando*, **Maestoso** ♩ = 84 *allargando*

put it in her bat - ter bet - ter So 'twas bet - ter Bet - ty Bot - ter  
*f* *mf*

147

bought a bit of bet - ter but - ter